

INSTRUMENT APPROACH CHART

RJTT / TOKYO INTL

RNAV (GNSS) RWY16L

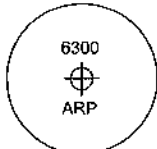
TOKYO APP 119.1 - 119.4 - 119.7 126.5 - 236.8 - 261.2	1 DME/DME not authorized. 2 RADAR service required. 3 GNSS required.	TOKYO TOWER 124.35 - 118.1 - 118.575 118.725 - 118.8	RADAR AVBL ATIS 128.8
---	--	--	--------------------------

Simultaneous approach authorized with RWY16R(RNAV)

Baro-VNAV not authorized below -10°C

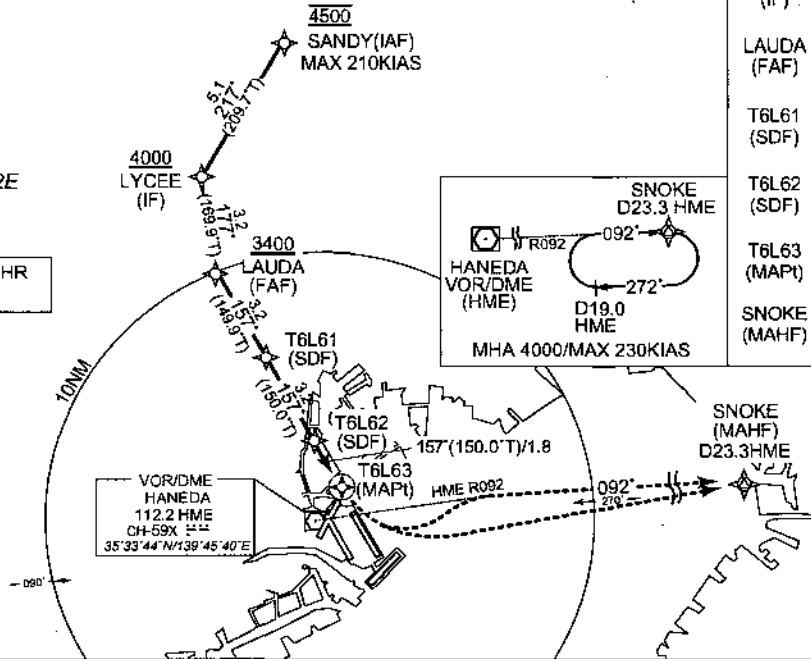
VAR 8°W (2019)

MSA 25NM



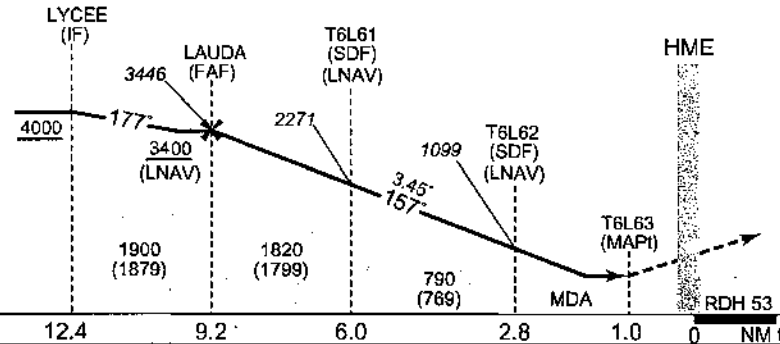
ARP : 353312N/1394652E

170KIAS at 9.2NM from THR if unable advise ATC



SANDY	354917.53N	(IAF)	1394402.84E
LYCEE	354454.12N	(IF)	1394057.40E
LAUDA	354144.81N	(FAF)	1394139.05E
T6L61	353858.19N	(SDF)	1394337.69E
T6L62	353611.85N	(SDF)	1394535.96E
T6L63	353438.26N	(MAPt)	1394642.43E
SNOKE	353551.64N	(MAHF)	1401411.69E

NM to Next FIX	FAF	8	7	6	5	4	3	2	1	MAPt
ALT (3.45' APCH Path)	3446	3370	3004	2637	2271	1905	1539	1172	806	-



MISSED APPROACH
Turn left, direct SNOKE and hold at 4000FT.
(For using VOR/DME)
Turn left to intercept and proceed via HME R092 to SNOKE and hold at 4000FT.
Contact TOKYO APP.
PAPI and descent angles not coincident.

Missed APCH climb gradient MNM 5.0%

MINIMA		THR elev. 19		AD elev. 21		
CAT	LNAV/VNAV		LNAV		CIRCLING	
	DA(H)	RVR/CMV	MDA(H)	RVR/CMV	MDA(H) VIS	
A	530 (511)	1000	530 (509)	1000	730 (709) 1600	
B		1200		1200		
C		1600		1600		2400
D						3200

CHANGE : New PROC

MINIMA with Missed APCH climb gradient of 2.5% are not established.
Circling is not authorized during the night time, except counterclockwise circling to RWY16R, clockwise circling to RWY22/23/34R/34L.

INSTRUMENT APPROACH CHART

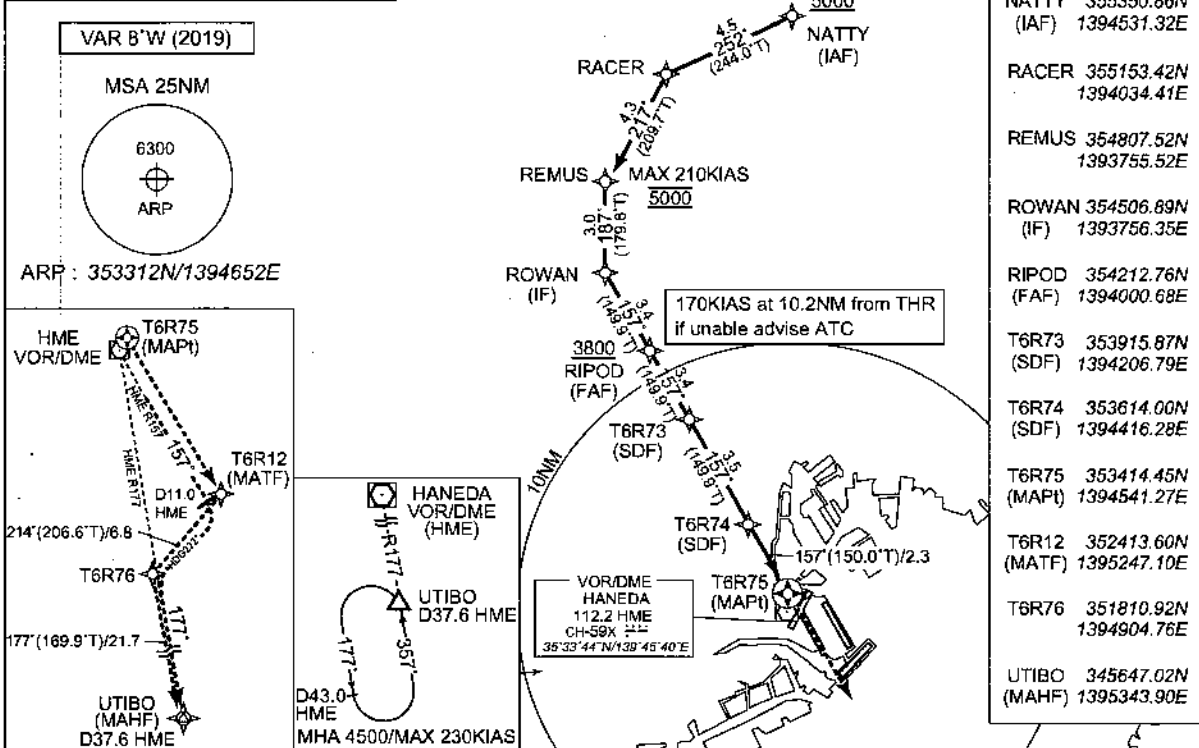
RJTT / TOKYO INTL

RNAV (GNSS) RWY16R

TOKYO APP 119.1 - 119.4 - 119.7 126.5 - 236.8 - 261.2	1 DME/DME not authorized. 2 RADAR service required. 3 GNSS required.	TOKYO TOWER 118.1 - 124.35 - 118.575 118.725 - 118.8	RADAR AVBL ATIS 128.8
---	--	--	--------------------------

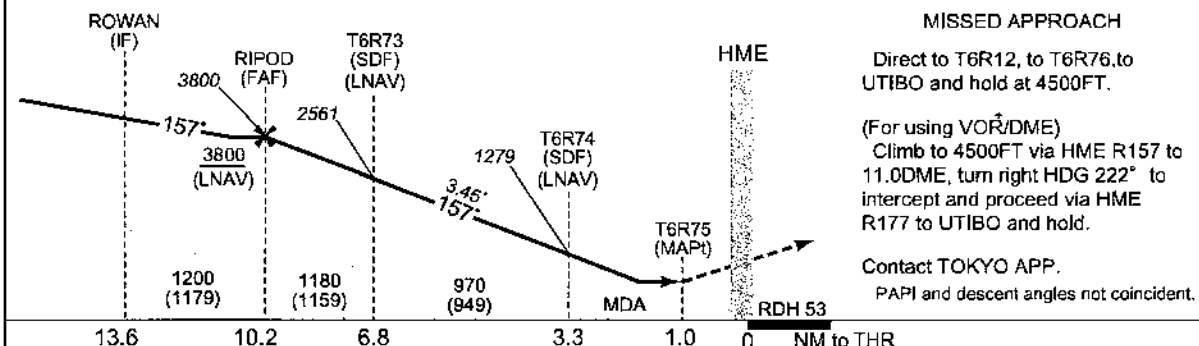
Simultaneous approach authorized with RWY 16L(RNAV)

Baro-VNAV not authorized below -10°C



NATTY	355350.86N	(IAF)	1394531.32E
RACER	355153.42N		1394034.41E
REMUS	354807.52N		1393755.52E
ROWAN	354506.89N	(IF)	1393756.35E
RIPOD	354212.76N	(FAF)	1394000.68E
T6R73	353915.87N	(SDF)	1394206.79E
T6R74	353614.00N	(SDF)	1394416.28E
T6R75	353414.45N	(MAPt)	1394541.27E
T6R12	352413.60N	(MATF)	1395247.10E
T6R76	351810.92N		1394904.76E
UTIBO	345647.02N	(MAHF)	1395343.90E

NM to Next FIX	FAF	9	8	7	6	5	4	3	2	1	MAPt
ALT (3.45° APCH Path)	3800	3734	3367	3001	2635	2268	1902	1536	1169	803	-



Missed APCH climb gradient MNM 5.0%

CAT	LNAV/VNAV		LNAV		CIRCLING	
	DA(H)	RVR/CMV	MDA(H)	RVR/CMV	MDA(H)	VIS
A	570 (554)	1000	570 (549)	1000	730 (709)	1600
B		1200		1200		2400
C		1600		1600		3200
D						

MINIMA with Missed APCH climb gradient of 2.5% are not established.
 Circling is not authorized during the night time, except clockwise circling to RWY16L/22/23/34R/34L.

CHANGE: New PROC

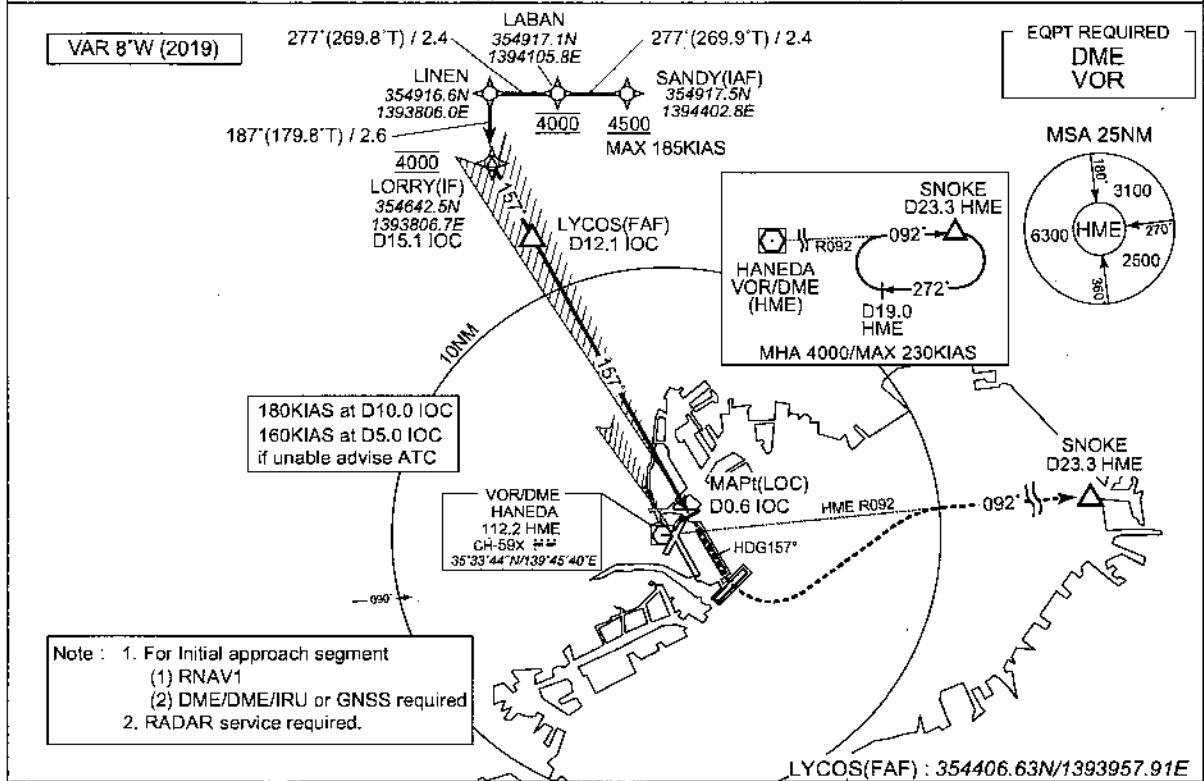
INSTRUMENT APPROACH CHART

RJTT / TOKYO INTL

ILS or LOC RWY16L

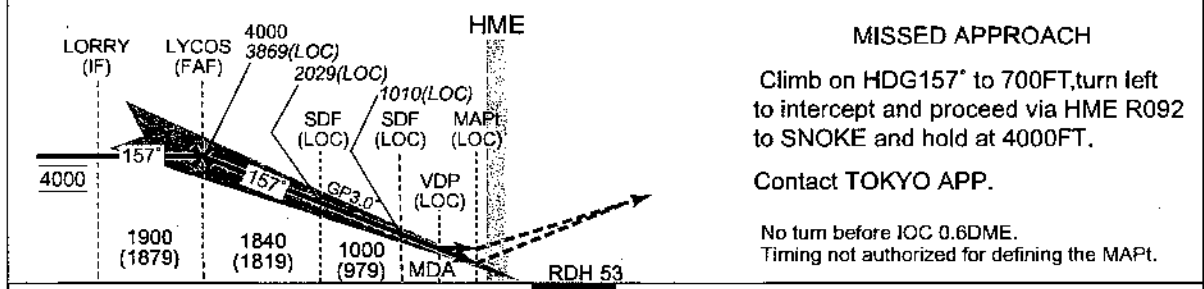
TOKYO APP 119.1 - 119.4 - 119.7 126.5 - 236.8 - 261.2	ILS - LOC 111.95 IOC ILS-GP 330.95 ILS-DME CH-56Y	TOKYO TOWER 124.35 - 118.1 - 118.575 118.725 - 118.8	RADAR AVBL ATIS 128.8
---	--	--	--------------------------

Simultaneous approach authorized with RWY 16R(ILS)



Note : 1. For Initial approach segment
(1) RNAV1
(2) DME/DME/IRU or GNSS required
2. RADAR service required.

NM to IOC	FAF	12	11	10	9	8	7	6	5	4	3	2	MAPt
ALT (3.0° APCH Path)	3869	3833	3515	3197	2878	2560	2241	1923	1604	1286	967	649	-



15.1	12.1	6.3	3.1	1.7	0.6	0.2	DME to IOC
15.0	12.0	6.2	3.0	1.5	0.5	0	NM to THR

Missed APCH climb gradient MNM 5.0%

MINIMA		THR elev. 19		AD elev. 21			
CAT	CAT I		LOC		CIRCLING		
	DA(H)	RVR/CMV	MDA(H)	RVR/CMV	MDA(H)	VIS	
A	219 (200)	550	530 (509)	1000	730 (709)	1600	
B				1200			
C				1600			2400
D				1600			3200

MINIMA with Missed APCH climb gradient of 2.5% are not established.
Circling is not authorized during the night time, except counterclockwise circling to RWY16R, clockwise circling to 22/23/34R/34L.

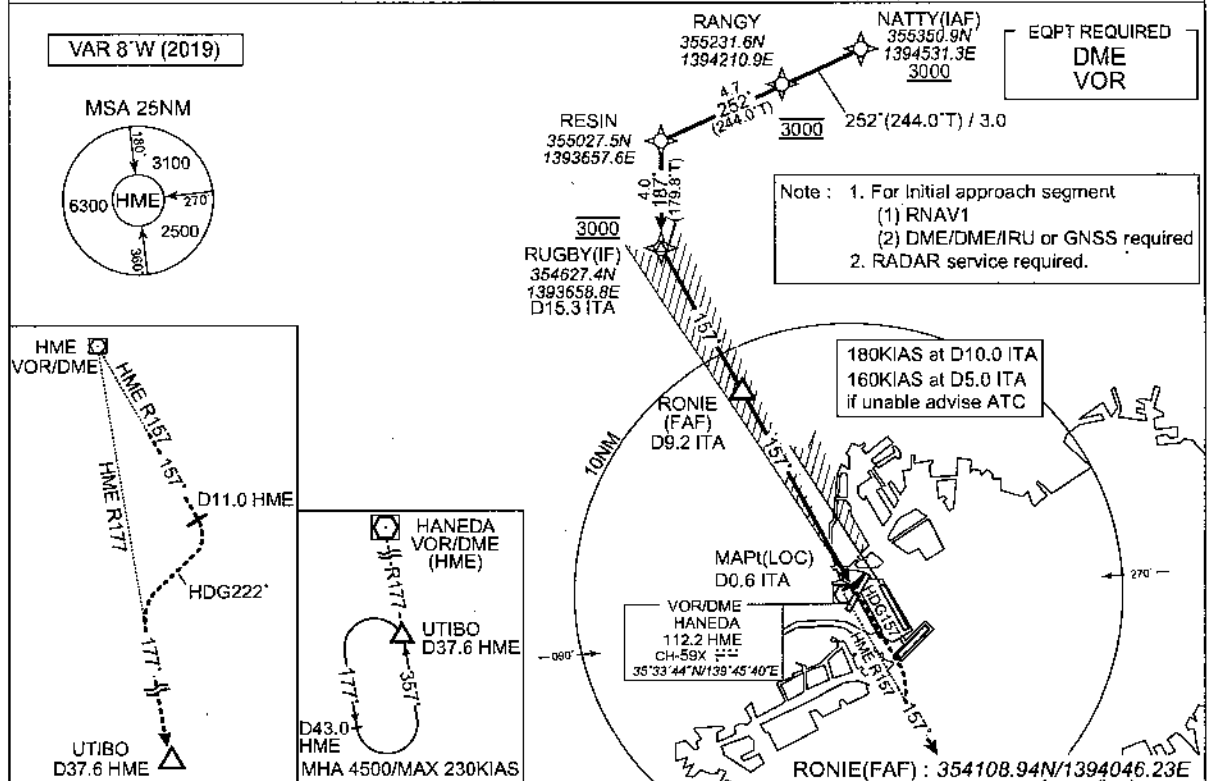
INSTRUMENT APPROACH CHART

RJTT / TOKYO INTL

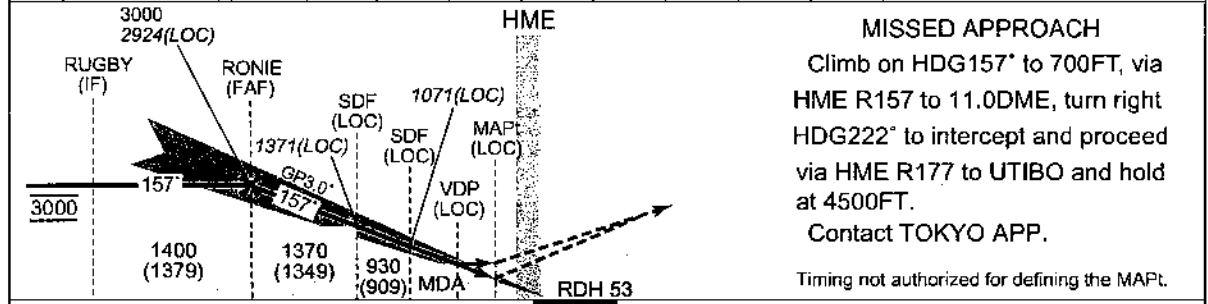
ILS or LOC RWY16R

TOKYO APP 119.1 - 119.4 - 119.7 126.5 - 236.8 - 261.2	ILS - LOC 111.55 ITA ILS-GP 332.75 ILS-DME CH-52Y	TOKYO TOWER 118.1 - 124.35 - 118.575 118.725 - 118.8	RADAR AVBL ATIS 128.8
---	--	--	--------------------------

Simultaneous approach authorized with RWY 16L(ILS)



NM to Next ITA	FAF	9	8	7	6	5	4	3	MAPt
ALT (3.0' APCH Path)	2924	2873	2554	2236	1918	1599	1281	962	-



MISSED APPROACH
Climb on HDG157° to 700FT, via HME R157 to 11.0DME, turn right HDG222° to intercept and proceed via HME R177 to UTIBO and hold at 4500FT.
Contact TOKYO APP.
Timing not authorized for defining the MAPt.

15.3	9.2	4.3	3.3	1.9	0.6	0.2	DME to ITA
15.1	9.0	4.1	3.2	1.7	0.5	0	NM to THR

Missed APCH climb gradient MNM 5.0%

MINIMA		THR elev. 16		AD elev. 21		
CAT	CAT I		LOC		CIRCLING	
	DA(H)	RVR/CMV	MDA(H)	RVR/CMV	MDA(H)	VIS
A	216 (200)	550	570 (549)	1000	730 (709)	1600
B				1200		2400
C				1600		3200
D						

MINIMA with Missed APCH climb gradient of 2.5% are not established.
Circling is not authorized during the night time, except clockwise circling to RWY16L/22/23/34R/34L.

CHANGE : New PROC